

# FORMA MOLD™

5-Axis Milling, Pattern, Plug, & Mold Fabrication

## 5-AXIS MILLING AND LIGHT RTM TOOLING

**Any Size...**  
**... Any Shape**

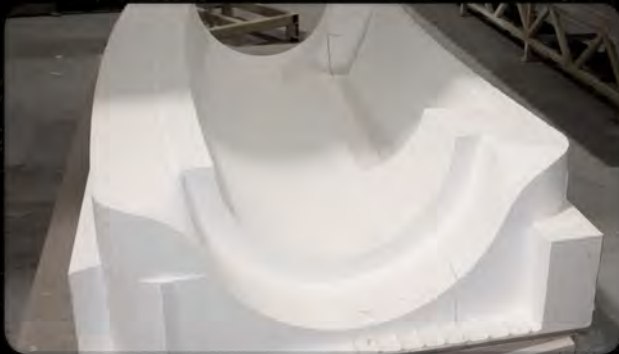
FormaShape owns and operates one of North America's largest 5-Axis Computer Numeric Control (CNC) Routers. The PAR Systems MR125 Router provides a massive working envelope 43' x 20' x 8' for cutting and milling complex 3D.



### Massive working envelope for large single piece plugs and molds

On average, FormaShape produces 5 new RTM molds per month for high volume part production.

### Complete Plug and Mold Fabrication



**"FormaShape fabricated the mold for the central hub of our second 10m prototype parabolic reflector. This mold is approximately 1m deep by 2m diameter and required tolerance of less than 1mm. FormaShape delivered the mold to a very tight schedule and within tolerance. We are very happy with their work."**

Dean Chalmers, Canadian National Research Council

**FORMASHAPE™**

3D Architectural Design Solutions

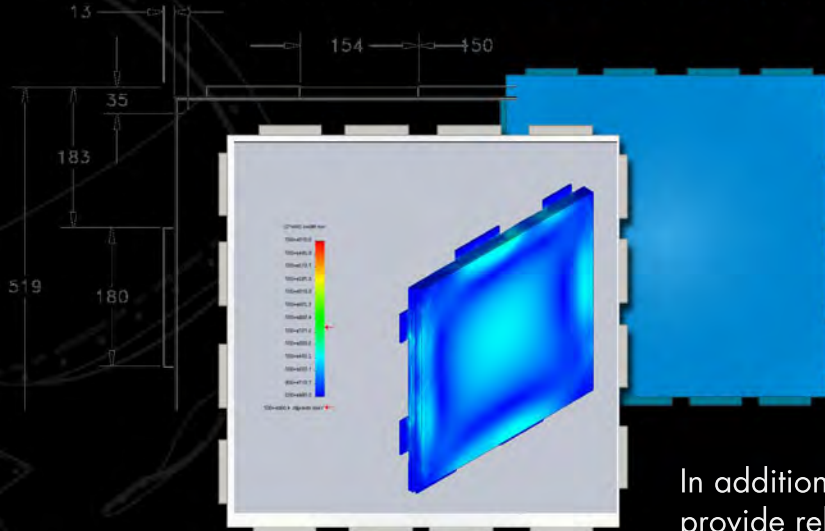
9505 Haldane Rd. Kelowna, British Columbia, Canada, V4V 2K5

1.800.882.7638 [www.formashape.com](http://www.formashape.com)

# FORMAMOLD™

5-Axis Milling, Pattern, Plug, & Mold Fabrication

## FIBERGLASS DESIGN ENGINEERING



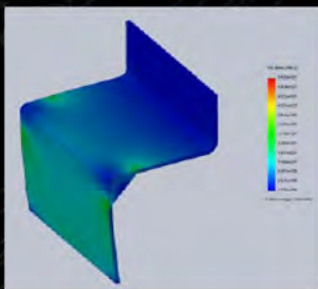
### Design Solutions!

Photorealistic renderings and animations allow engineers to communicate how future products will look and perform early in the development cycle. After evaluating initial designs with clients, FormaShape™ engineers can promptly revise or adapt preliminary model designs to suit client needs.

In addition, NEi Nastran and Solidworks software provide reliable stress analysis on complex parts.

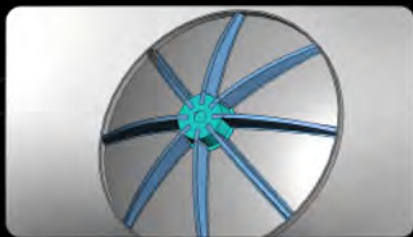
### Part Modeling, Chemical Engineering,

### Flow Analysis, Performance Testing

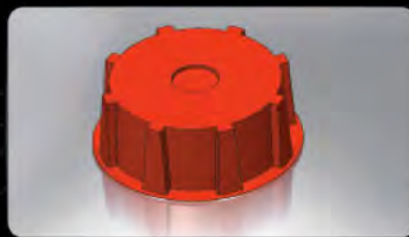


- NEi Nastran Software  
Reliable Stress Analysis on Complex Parts
- Solidworks 3D Modelling  
Photorealistic Renderings and Animations
- Site Drawings and Installation Instructions,  
Attachment Systems, Material Specifications

### From Concept to Completion!



Conceptual Renderings



Detailed Part Modeling



Completed Part Production

## FORMASHAPE™

3D Architectural Design Solutions

9505 Haldane Rd. Kelowna, British Columbia, Canada, V4V 2K5

1.800.882.7638 www.formashape.com